



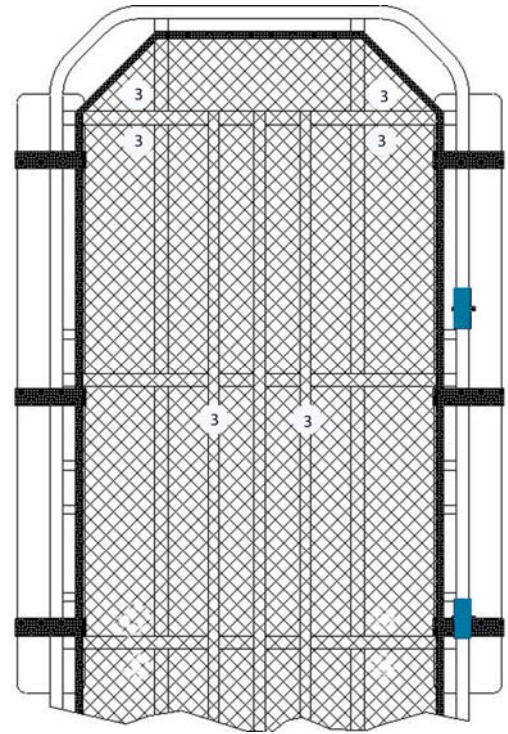
# OWNER'S MANUAL FLOTATION KIT #103-TI

## **WARNINGS & CAUTIONS**

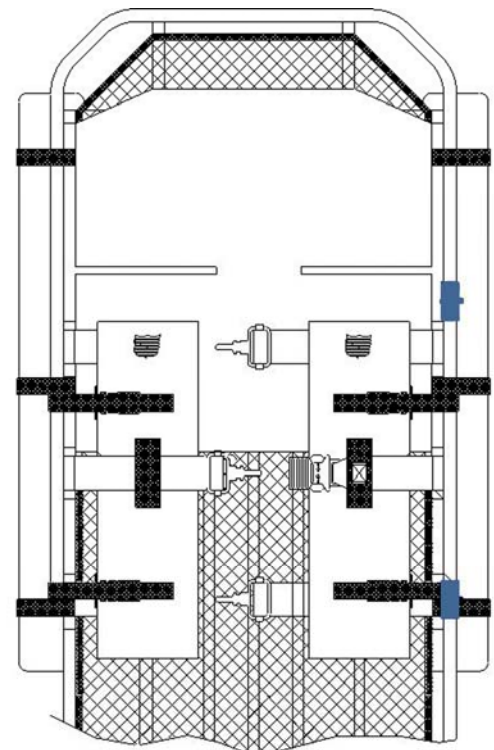
- Flotation Kit #103-TI has been designed and tested only on LSC's #404 and #406 stretchers.
- The flotation logs, chest pads and back pad must be positioned on the stretcher as illustrated in figures #1 and #2. A five pound ballast bar must be installed on the foot end of the stretcher to aid in self-righting.
- The chest pad strap must be connected and properly adjusted to secure the chest pads.
- Backboards that produce buoyancy (wood backboards or backboards that are constructed of foam filled plastic) can prevent the stretcher from self-righting. Also, patients wearing full wet suits or a survival suit may prevent proper self-righting due to the buoyancy in the legs of the clothing.
- Prolonged exposure to direct sunlight will damage the fabric and webbing.

## **INSTALLATION**

1. Remove old style flotation kit if installed.
2. Carefully cut an "X" from the plastic netting to produce approximately a 1" opening at each position marked 3 as shown on Figure #1. Place the back flotation pad in the stretcher with the angled side at the head section and attachment straps down. Pass straps through cut openings and around the transverse members on the outboard side of the 3/4" skid tubing. Close the buckles.
3. To install the chest pads lay both pads in stretcher with labels facing up and toward head end with attachment straps pointing outboard. Left side pad has loop tape on under side of main belt loop (see figure 2).
4. To install the right chest pad, lace the adjuster end of the chest pad strap (black, 2" wide) under the belt loop on front of the right chest pad. Attach chest pad to frame by passing chest pad female buckle straps between top tubular and flat stock rails (inboard to outboard) at the positions shown in figure 2. Ensure lower chest pad attachment strap is directly above red patient restraint strap. Pull straps around top tubing rail and pass up through loops on the side of the pad and secure to the chest pad male attachment buckle.



**FIGURE 1.**



**FIGURE 2.**

## INSTALLATION Continued

5. To install the left chest pad, remove the old chest pad buckle strap from stretcher and replace with the longer chest pad buckle strap provided. Ensure hook tape on strap is facing up. Pass the buckle end of strap under the loop on front of the left chest pad and engage hook tape on buckle strap with loop tape on lower side of chest pad belt loop. Attach chest pad to frame by passing chest pad female buckle straps between top tubular and flat stock rails (inboard to outboard) at the positions shown on figure #2. Ensure lower chest pad attachment strap is directly above center (red) patient restraint strap. Pull straps around top tubing rail and pass up through loop on the side of the pad and secure to chest pad male attachment buckle.
6. Open all buckles on half-logs. Position the half-logs as illustrated in Figure #1 with the flat side against the frame and female plastic buckles pointing down. Lace male end of each attachment strap up between mesh liner and the 1/2" flat bar at proper frame positions shown on figure #1. Pull strap up and around top frame tube then down outside edge of log.
7. Secure strap to female buckle end. Close the log strap buckle completely. Repeat for other straps. Position buckles to provide a low profile.
  - a. **Warning: Ensure that both sides of the buckle have latched together. These fit very tight.**
8. Install ballast bar on foot end of stretcher with the hardware provided and tighten securely.
9. Should any questions arise during installation, please contact the LSC factory for clarification.

## MAINTENANCE

1. Prior to use and every three months, check the stretcher, flotation kit, and restraint straps for function and condition.
2. Inspect stretcher frame for bends, corrosion, cracks, gouges, and excess wear.
3. Inspect the fabric, webbing, and miscellaneous hardware for condition, location, and proper function. Replace or repair as required.
4. Fresh water wash with mild soap after exposure to saltwater or excess soiling. Allow to completely air dry prior to stowage. Prolonged exposure to direct sunlight will damage the fabric and webbing.
5. Disinfect or replace all porous materials exposed to body fluids. Sterilize stretcher frame.

## REPLACEMENT PARTS

- |        |                                       |
|--------|---------------------------------------|
| #103-1 | Flotation Half Logs, Pair             |
| #103-2 | Flotation Log Covers, Pair            |
| #103-3 | Chest Pads, Pair                      |
| #103-4 | Chest Pad Covers, Pair                |
| #103-5 | Chest Pad Buckle Strap                |
| #103-6 | Back Pad                              |
| #140   | Patient Restraint Straps, 5/Set       |
| #140-B | Patient Restraint Straps, 5/Set Black |
| #170   | Ballast Bar                           |

## WARRANTY

LSC products are warranted to the first consumer purchaser to be free from defects in material or workmanship for a period of twelve (12) months. Please contact LSC for our complete Warranty information and Policies, or visit our website.

### **LIFESAVING SYSTEMS CORP.**

220 ELSBERRY RD.  
APOLLO BEACH, FL 33572  
PHONE: 813/645-2748  
FAX: 813/645-2768  
[www.lifesavingsystems.com](http://www.lifesavingsystems.com)