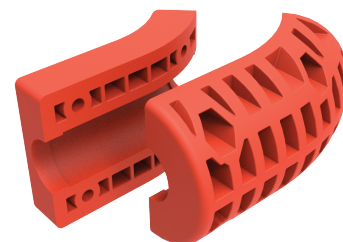


182 Litter Rail Pads, Set of 14

Lifesaving Systems is proud to offer a professional solution to a common field problem; Litter Rail Pads. These pads are specifically designed to fit the contours of our 404 and 406 series Medevac stainless steel and titanium Medevac litters. They are easily attached in just minutes and will offer protection for all types of airframes during hoisting evolutions. The material used in molding processes remains flexible in all environments including extremes of minus seventy Fahrenheit. The pads are neutrally buoyant and do not affect the flotation characteristics of litters fitted with flotation kits.

Available international orange – a full set (for litters with flotation installed) includes 14 pads.



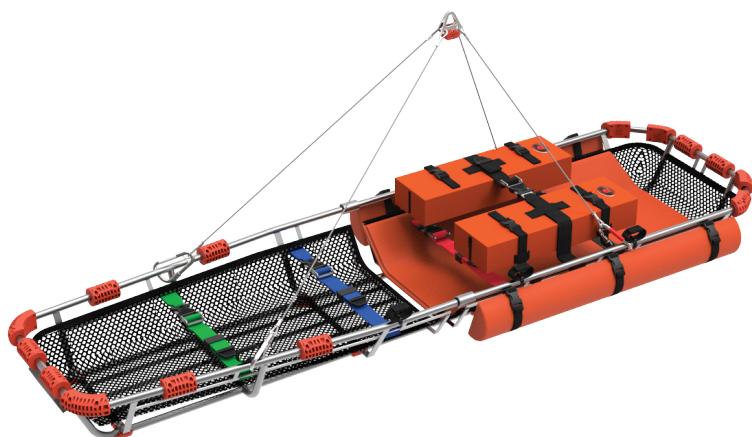
Pad split apart



Pad rear view



Pad front view



Kit #182 installed on litter #406
Litter not included

Litters without flotation kits will require an additional set of straight pads – LSC Part # 185 *see next page*

Technical Specifications:

#182 Litter Rail Pads for Litters 404 and 406 with Flotation

Weight	3 lbs (1.36kg) for the kit
--------	----------------------------

LIFESAVING SYSTEMS CORPORATION



220 Elsberry Road, Apollo
Beach, Florida 33572



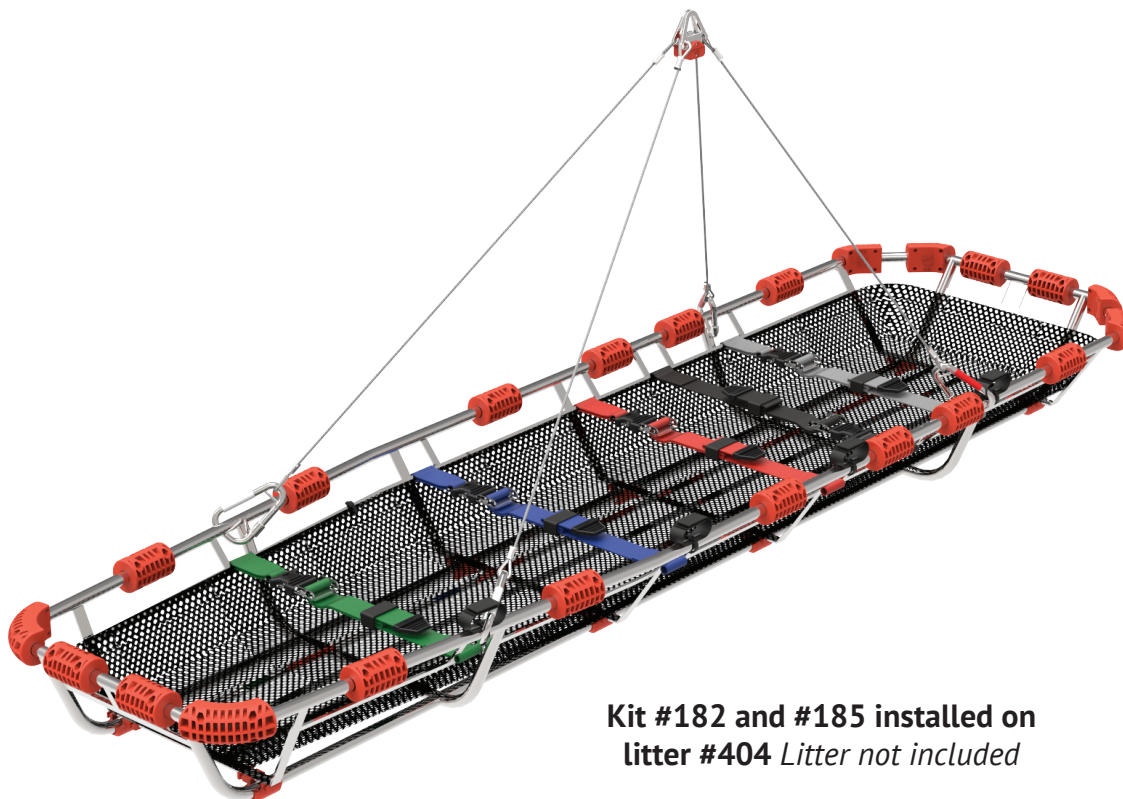
(813)645-2748



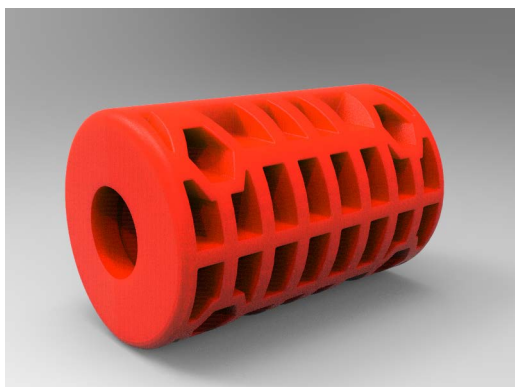
www.lifesavingsystems.com



185 Litter Rail Pads, Set of 8



**Kit #182 and #185 installed on
litter #404** *Litter not included*



Straight Pad

These eight straight pads will attach to the frame of litters without the flotation kits. Combined with LSC Kit #182, these pads will protect rescue aircraft from the litter rail.

Technical Specifications:


#185 Litter Rail Pads for Litters 404 and 406 without Flotation

Weight

3 lbs (1.36kg) for the kit

LIFESAVING SYSTEMS CORPORATION

 220 Elsberry Road, Apollo
Beach, Florida 33572

 (813)645-2748

 www.lifesavingsystems.com

